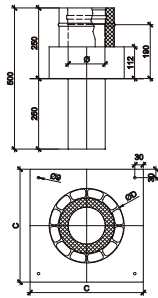


3.1 d) DW - al Rozmery

DWAL08

UD ▼	ÜD ▲	ti/ta = 0,6 - 1,0
------	------	-------------------



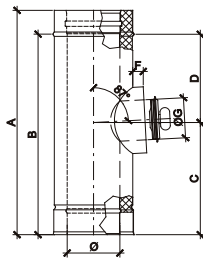
Základová doska pre komínové navýšenie so zadným odvetrávaním vr. goliera



Ø	80	100	130	150	160	180	200	225	250	300
A										
B										
C	400	400	400	400	400	400	600	600	600	600
D	215	235	265	290	300	315	345	365	380	450
kg		3,04	3,8	4,13	4,48	4,48	4,7		5,03	
Ø	350	400	450	500	600	700	800	900	1000	
A										
B										
C	600	650	650	700	800	900	1000	1100	1200	
D	500	550	600	650	750	850	950	1050	1150	
kg										

DWAL10

UD ▼	ÜD ▲	ti/ta = 0,6 - 1,0
------	------	-------------------



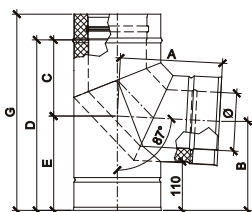
Čistiaci prvok



Ø	80	100	115	130	150	160	180	200	225	250
A										558
B										498
C										279
D										219
F										30
G	80	100	130	150	150	150	180	180	180	250
kg	3,2	3,84	4,25	4,87	5,61	7,60	8,16	8,58		10,00
Ø	300	350	400	450	500	600	700	800	1000	
A										558
B										498
C										279
D										219
F										30
G	250	250	250	250	250	250	250	250	250	
kg	11,30	13,50								

DWAL57

UD ▼	ÜD ▲	ti/ta = 0,6 - 1,0
------	------	-------------------



Koleno 87° s podperou



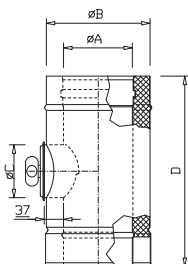
Ø	80	100	130	150	160	180	200	225	250	300
A	206	216	230	240	249	254	263	275	287	311
B	184	194	208	219	224	234	243	256	269	294
C	149	158	172	182	187	198	206	217	229	253
D	340	360	390	410	420	440	460	486	510	560
E	191	202	218	228	233	244	254	269	281	307
G	400	420	450	470	480	500	520	545	570	620
kg			3,96	4,15		5,80		8,20	8,20	10,60
Ø	350	400	450	500	600	700	800	900	1000	
A	334	358	382	406	453	501	548	595	643	
B	319	343	369	394	444	494	544	594	644	
C	277	300	324	348	395	443	490	538	585	
D	610	660	710	760	860	960	1060	1160	1260	
E	333	360	386	412	465	517	570	622	675	
G	670	720	770	820	920	1020	1120	1220	1320	
kg										



DWAL294

ÜD ▲ ti/ta = 0,6 - 1,0

Predženie s čistiacim otvorom (iba dymovod) do 200°C / 200 Pa



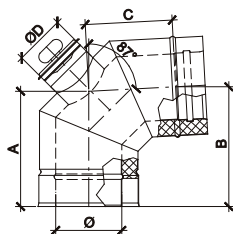
Ø	80	100	115	130	150	160	180	200	225	250
A	80	100	115	130	150	160	180	200	225	250
B	145	165	180	195	215	225	245	265	290	315
C	80	80	100	100	130	130	130	130	130	130
D	500	500	500	500	500	500	500	500	500	500
kg				3,83	4,19	4,40	4,75	5,15		6,69

Ø	300	350	400	450	500	600				
A	300	350	400	450	500	600				
B	365	415	465	515	565	665				
C	130	200	200	200	200	200				
D	500	500	500	500	500	500				
kg	7,36									

DWAL67

ÜD ▲ ti/ta = 0,6 - 1,0

Koleno s čistiacim otvorom 87°



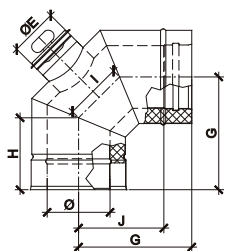
Ø	80	100	130	150	160	180	200	225	250	300
A	206	215	229	239	244	253	263	274	286	310
B	213	226	241	248	253	263	273	286	298	323
C	149	158	172	182	187	196	206	217	229	253
D	80	80	100	130	130	130	130	130	130	150
kg	1,73	2,13	2,45	3,25	3,49	4,02	4,56	5,27	6,02	7,67

Ø	350	400	450	500	600	700	800	900	1000	
A	334	357	381	405	445	500	547	595	642	
B	348	373	398	423	473	523	573	623	673	
C	277	300	324	348	395	443	490	538	585	
D	150	150	200	200	200	200	200	200	200	
kg	9,52	11,51	13,70	16,05						

DWAL19

ÜD ▲ ti/ta = 0,6 - 1,0

Koleno 90° s čistiacim otvorom



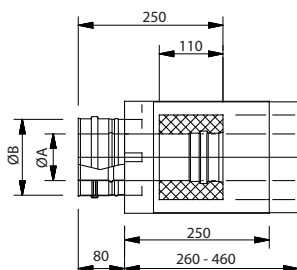
Ø	80	100	130	150	160	180	200	225	250	300
E	80	80	100	130	130	130	130	130	130	150
G	211	221	236	246	251	261	271	283	296	321
H	140	144	150	154	156	161	165	170	175	185
I	100	108	121	129	133	141	150	160	170	191
J	151	161	176	186	191	201	211	223	236	261
kg			4,01	4,30	5,20	5,86	6,35		8,20	10,60

Ø	350	400	450	500	600	700	800	900	1000	
E	150	150	200	200	200	200	200	200	200	
G	346	371	396	421	471	521	571	621	671	
H	196	206	217	227	248	268	289	310	330	
I	212	233	253	274	315	357	398	440	481	
J	286	311	336	361	411	461	511	561	611	
kg	13,00	15,56								

DWAL-37LAS

ti/ta = 0,6 - 1,0

Prechodka z koncentrického systému na trojvrstvový



Ø	80	100	130	150	160	180	200	225	250	300
A	80	100	115	120	130	160	180	225	250	300
B	145	165	180	195	215	225	245	290	315	365
C										
D										
kg										

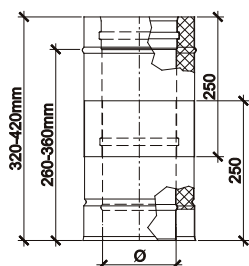
Ø	350	400	450	500	600					
A	350	400	450	500	600					
B	415	465	515	565	665					
C										
D										
kg										

3.1 d) DW - al Rozmery

DWAL50

ÜD ▲

ti/ta = 0,6 - 1,0



Posuvný prvok 320 - 480 mm

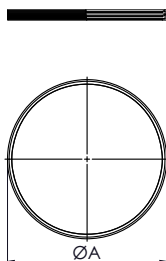


Ø	80	100	115	130	150	160	180	200	225	250
A										
B										
C										
D										
kg			3,65	4,16	4,48	4,75	5,38	5,60		6,50

Ø	300	350	400	450	500	600
A						
B						
C						
D						
kg	7,90					

ALBI26

ti/ta = 0,6 - 1,0



Vnútorne tesnenie



Ø	80	100	115	120	130	140	150	160	180	200
A	80	100	115	120	130	140	150	160	180	200
B										
C										
D										
kg										

Ø	225	250	300	350	400	450	500	550	600
A	225	250	300	350	400	450	500	550	600
B									
C									
D									
kg									